



# CORPORATE CATALOGUE 2022

# GRIDWALLS

 **ESTA EUA**  
energy&utilities alliance

[www.gridwalls.co.uk](http://www.gridwalls.co.uk)

# TABLE OF CONTENTS

---

About Gridwalls	03
Our Purpose	05
Core Values	08
Our Production Capacity and Facilities	09
Key Components to our Production System	12
Our Products and Professional Services	15
Our Projects	19
Contact Information	20



“We ensure  
our products  
improve our  
customer’s  
quality  
of living”



# ABOUT GRIDWALLS

Gridwalls is a contractor of architectural aluminum and steel glazing products which provides a full -service building façade solutions from consultation, design and engineering, fabrications and installation of stick curtain systems, unitized facades, balustrades, doors and windows, spider glass and fin systems, domes and skylights and louvers and sunshades as well as restoration of old building facades.

We operate in a modern purpose-designed production facility in London, United Kingdom to serve our clients from the European region, while our headquarters and main production facility is located in Dubai, United Arab Emirates. Our production facilities are equipped with the most modern and advanced machineries and equipment

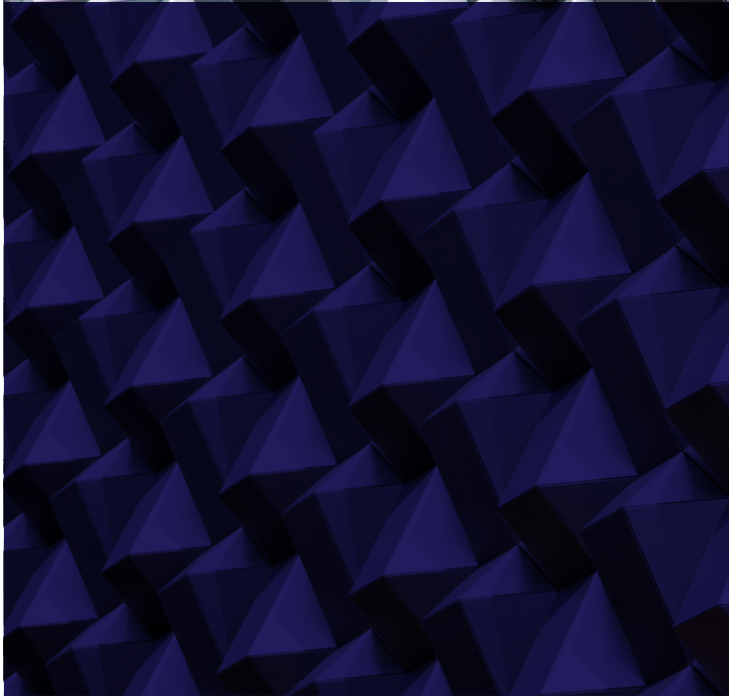
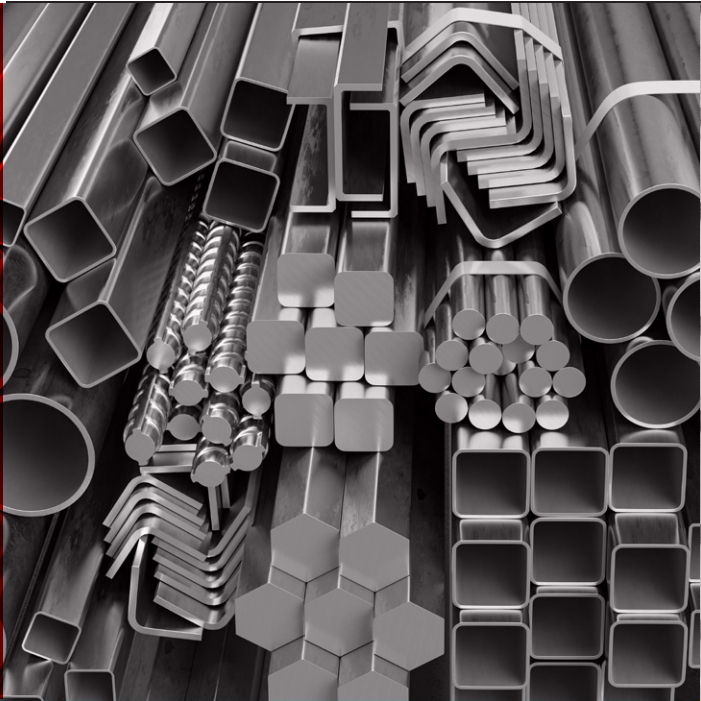
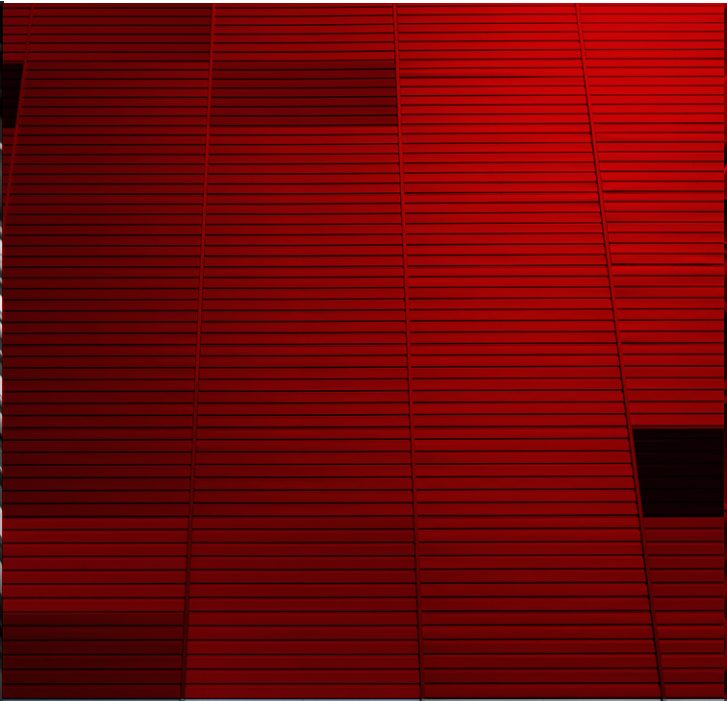
We established a system for in-house development and production, meticulously paying attention to the quality and requirements from raw materials to the manufacturing equipment and end products. We focus on Quality and incorporate the same through all our business activities. Moreover, are also an approved and certified fabricator by numerous German, French and European façade system developers.







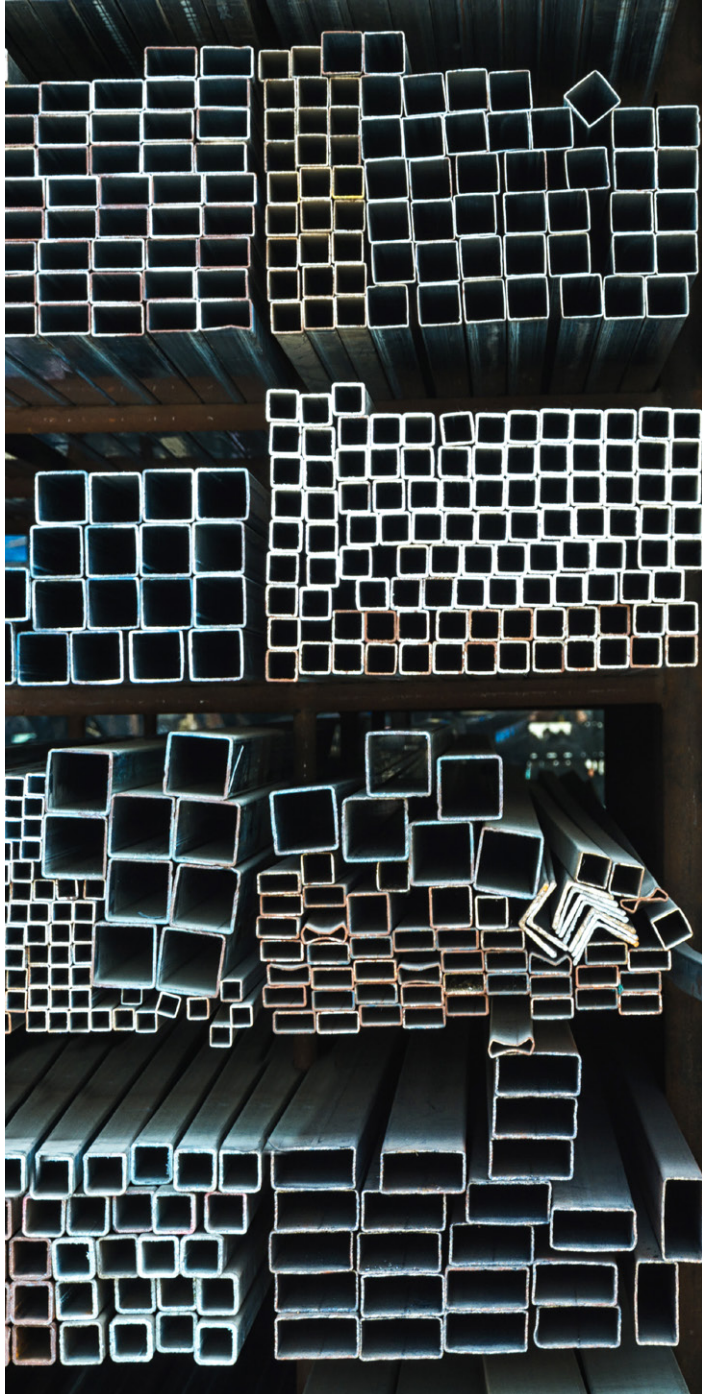














# OUR CORE VALUES



## INTEGRITY

We do things honestly. We reflect it to our daily work, our product quality, our transparency in .dealing with others



## RESPECT

We treat everyone with value and sincerity in .every aspect of business



## CONSTANT IMPROVEMENT

We always aim to improve our products, services .and our people



## UNITY

We are strongest when we work together as a TEAM



## QUALITY

We provide outstanding and deliver .premium value to our customers



## PERSONAL ACCOUNTABILITY

We take responsibility to deliver our .commitments

# OUR PRODUCTION FACILITIES

Our production Department is orchestrated by managers and supervisors who are highly experienced in manufacturing complicated facades and aluminum products





# PRODUCTION CAPACITY

Minimum Monthly Capacity

**40%**

Product: UCW  
Area: 8,500 sqm

**35%**

Product: SCW  
Area: 7,500 sqm

**10%**

Product: W&D  
Area: 2,000 sqm

**15%**

Product: Cladding  
Area: 4,000 sqm

**100%**

Area: 22,000 sqm

# THE KEY COMPONENTS OF OUR PRODUCTION SYSTEM



## MATERIALS

Aluminum & Glass Raw materials are produced locally & internationally by specialized extruders & manufacturers



## COMPONENTS

All Production elements for glass & aluminum are manufactured by system suppliers based on the Projects Specification



## MACHINERIES & EQUIPMENT

We develop our own manufacturing lines, equipment and process management systems and utilize them in our domestic plants



## PROCESSING, ASSEMBLING & PACKAGING

Our products are in our carefully controlled plants, from preparing the components, quality checking, assembly until careful packaging of materials to delivery of the same to including the proper installation to project sites

# OUR PRODUCTS

“We constantly strive to improve our capabilities in technological development, quality management and customer service to offer our products and services that earn the satisfaction and trust of our customers”



## UNITISED FACADES

Unitized facades are made from modules, which are pre-assembled in the factory. They essentially consist of the frame, glazing, sealing system, and connecting elements. On the construction site, the individual facade elements only need to be correctly mounted and aligned



## BALUSTRADES

Balustrade, low screen formed by railings of stone, wood, metal, glass, or other materials and designed to prevent falls from roofs, balconies, terraces, stairways, and other elevated architectural elements



## STICK CURTAIN SYSTEMS

The Stick System is a curtain walling system consisting normally of extruded aluminum transoms and mullions known as “sticks” which are cut to length in the factory prior to assembly on site which may comprise of mechanically held fixed or open glazing (single pane or double-glazed units)



## SPIDER GLASS AND FIN SYSTEM

The use of spiders with structural glass fins is a versatile system providing clean lines to a building facade. The glass fins are normally used as a vertical mullion but can be used as a horizontal transom or in overhead glazing applications





### **DOORS AND WINDOWS**

Door/ window main frame is installed by fixing the top and bottom frame to the concrete using the appropriate fixing as per approved drawing. Alignment is checked and adjusted as per the requirement. Shimming will be provided where required, to meet the correct position. Aluminum and concrete material separator shall be provided .as required in the specification



### **DOMES AND SKYLIGHTS**

Skylight is a structure that allows light on the roof to travel to the interior of a building. There are three main components of a skylight the top structure, the ceiling frame and ceiling panel, and the duct which connects the top structure to the ceiling frame. Depending on the project requirement skylights framing components are generally Aluminium and other lightweight metals



### **LOUVERS AND SUNSHADES**

An aluminum louver is a protective window covering which allows air and light passage and keeps away rain and sunshine. Aluminum louvers control airflow in an enclosed area or a processed system. Louver belongs to the category damper and consists of parallel blades inside a duct

“We comply with all relevant requirements to ensure our products and services quality.

We carefully set products / services objectives and review results and allocate operational resources for that purpose as needed.”

# OUR PROFESSIONAL SERVICES



## CONSULTANCY/ DESIGN ENGINEERING

During the initial stage of the project, we offer technical assistance to our clients from architectural concept, preparation of façade performance specifications and design development

Our experts establish the best building options available for your project and develop façade design solutions which will provide optimal performance and constructability while maintaining your budget constraints and architectural preference



## PRODUCTION

We have our own dedicated façade production facility housing state-of-the-art machinery and equipment

Additionally, our facility in Dubai, United Arab Emirates stands on a sqm of plot, housing the most advanced machineries and has 27,700 sqm. The main 8,500 a monthly production capacity of approximate office facility could aid in the fabrication of our local, regional and worldwide projects





## PROJECT MANAGEMENT

We have a dedicated full time project teams in all our projects. These teams are locally based and full time in their assigned project sites, therefore ensuring direct control over the day-to-day activities such as installation and inspections



## INSTALLATION

Our project management team carry out careful planning and management of the installation phase to successfully handover the project with high quality, safely and on time







# OUR PROJECTS

“Our projects are designed, manufactured, installed and supervised by our professionals and ensures that only the best quality complying with applicable standards and regulations are delivered”







## G+1 TOWNHOUSES @ MAG CITY PHASE 1A

Client : Mag Group F.Z.E.

Consultant : Carsons Consultancy

Main Contractor : China National Chemical

Scope of Works : Aluminum & Glass Works-Access Panel, Ladder,  
Roof Railing, Glass Balustrades and Louvers

Size by SQM : 3,158





## **MAG EYE MEYDAN: 546 G+1 TOWNHOUSES**

Client : Mag Group F.Z.E.

Consultant : VX Studio Consultancy

Main Contractor : Intermass Engineering & Contracting

Scope of Works : Stick Curtain Wall, Doors, Window, Skylights, Cat Ladder

Size by SQM : 25,000





## MADINAT JUMEIRAH LIVING- SALES CLUSTER-PHASE 3A

Client : Majinat Jumeirah Living

Consultant : Next Engineering Consultants

Main Contractor : Al Sahel Contracting Company LLC

Scope of Works : Doors, Windows and Horizontal Louvers

Size by SQM : 5,548







## **G42 PHARMACEUTICAL MANUFACTURING (KZAD LIFE SCIENCE PARK PHASE 1)**

Client : Mag Group F.Z.E.

Consultant : Carsons Consultancy

Main Contractor : China National Chemical

Scope of Works : Aluminum & Glass Works-Access Panel, Ladder, Roof Railing, Glass Balustrades and Louvers

Size by SQM : 3,158





## **G+1 PRIVATE VILLAS @ NAAD AL SHEBA TYPE 93 & 96**

Client : Mag Group F.Z.E.

Consultant : VX Studio Consultancy

Main Contractor : Intermass Engineering & Contracting

Scope of Works : Doors, Windows, Canopy, Alum Balustrades

And Glass Balustrades

Size by SQM : 1,231





## SUR LA MER PHASE 1

Client : North 25/ Meraas

Main Contractor : Beaver Gulf

Scope of Works : Fabrication works- Aluminum hinged/sliding doors, windows and louvers

Size by SQM : 2,263





## BLOCK L AREEJ 1-7 AT ALJADA

Client : Arada Development

Consultant : Arif & Bintok

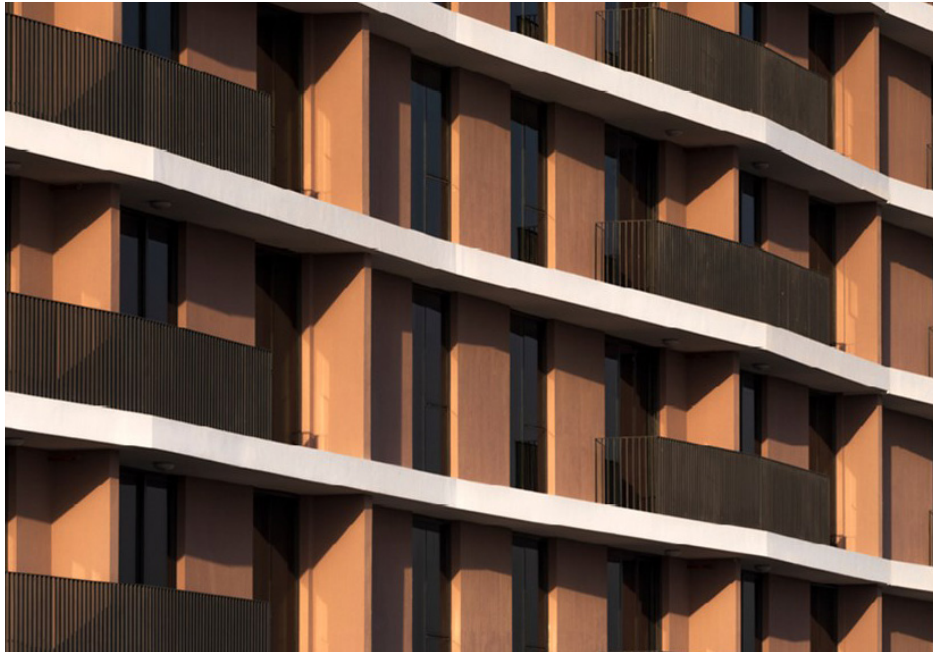
Main Contractor : MBCC, Intermass, Klamfer

Scope of Works : Vertical Louver & Roof Shade

Size by SQM : 14,025







## BLOCK L REHAN 1-3 AT ALJADA

Client : Arada Development

Consultant : Arif & Bintok

Main Contractor : MBCC, Intermass, Klamfer

Scope of Works : Vertical Louver & Roof Shade

Size by SQM : 14,025





## BLOCK L SARAB VILLAS AT ALJADA

Client : Arada Development

Consultant : Arif & Bint oak

Main Contractor : MBCC, Inter mass, Klamfer

Scope of Works : Vertical Louver & Roof Shade

Size by SQM : 14,025







## G+1 PRIVATE VILLA @ AL BARRARI

Client : Nabila Benattia

Consultant : Arch Alive

Main Contractor : Four Links

Scope of Works : Glass Balustrades





## BURJ ROYALE, DOWNTOWN DUBAI

Client : Emaar

Consultant : U+A

Main Contractor : Al Futtaim

Scope of Works : Glass Balustrades

Size by SQM : 4,800





## DEIRA WATERFRONT DEVELOPMENT- PHASE 1-PLOT 09

Client : Ithraa Dubai- Deira Waterfront Developments

Consultant : DAR

Main Contractor : China State

Scope of Works : Stick Curtain Walls, Doors, Windows, Cladding,  
Aluminum Trellis, Louver & Aluminum Balustrades

Size by SQM : 13,000









## **MISK APARTMENTS 1, 2, 3 & 4 ALJADA DEVT.**

Client : Arada Developments

Consultant : Arif & Bintok

Main Contractor : Intermass

Scope of Works : Stick curtain walls, Windows & other conventional works

Size by SQM : 29,700





## JABAL OMAR

Client : Jabal Omar Development Company

Main Contractor : ACC

Scope of Works : Fabrication, Assembly and Glazing





## AL FATTAN DOWNTOWN DEVELOPMENTS

Client : Al Fattan Properties

Main Contractor : Ali Mousa

Scope of Works : Fabrication, Assembly and Glazing

Size by SQM : 10,000









## SUSTAINABILITY PAVILION FOR DUBAI EXPO 2020

Client : Emaar

Main Contractor : ASGC

Scope of Works : Fabrication works – UCW Panels Reflector Panel Type and E-Tree  
DIA Frames for the Main Canopy

Size by SQM : 13,000



# PROJECT LIST

## ON-GOING PROJECTS 2021

Project Name	Scope of Work	Client	Consultant	Main Contractor	Status
AJD Misk Apartments 1-2	Supply & Installation of Stick Curtain Walls, Doors, Windows, Decorative Fins, Steel Shades, Louvers & Glazed Balustrades	Al Jada Developments LLC	Arif & Bint oak	IM	Ongoing
AJD Misk Apartments 3-4	Supply & Installation of Stick Curtain Walls, Doors, Windows, Decorative Fins, Steel Shades, Louvers & Glazed Balustrades	Al Jada Developments LLC	Arif & Bint oak	IM	Ongoing
Al Barrari Villa	Supply & Installation of Stick, Doors, Windows & Fins	Nabila Benattia	ARCH ALIVE	FOUR LINKS	Ongoing
Block L- Areej 1-4	Supply & Installation of Vertical Louver & Roof Shade	Al Jada Developments LLC	Arif & Bint oak	MBCC	Ongoing
Block L- Areej 5-7	Supply & Installation of Vertical Louver & Roof Shade	Al Jada Developments LLC	Arif & Bint oak	MBCC	Ongoing
Block L- Rehan 1-3	Supply & Installation of Vertical Louver & Roof Shade	Al Jada Developments LLC	Arif & Bint oak	IM	Ongoing
Block L- Sarab Villas	Supply & Installation of Vertical Louver & Roof Shade	Al Jada Developments LLC	Arif & Bint oak	KLAMPFER	Ongoing
Block L- Misk Car Park	Supply & Installation of Vertical Louver & Roof Shade	Al Jada Developments LLC	Arif & Bint oak	IM	Ongoing
MAG Eye Meydan: 546 Nos. (G+1) Townhouses	Supply and Installation of Stick Curtain Wall, Doors, Windows, Aluminum Cat Ladder, Staircase Balustrades, Access Hatch	Mag Group F.Z.E	VX Studio Consultancy	Intermass Engineering & Contracting	Ongoing
G+1 Private Villas @ Nad Al Sheba Type 93 & 96	Supply and Installation of Doors, Windows, Canopy, Alum. Balustrades and Glass Balustrades	Mag Group F.Z.E	VX Studio Consultancy	Intermass Engineering & Contracting	Ongoing



## ON-GOING PROJECTS 2021

Project Name	Scope of Work	Client	Consultant	Main Contractor	Status
Madinat Jumeirah Living-Sales Cluster-Phase 3A	Supply and Installation of Doors, Windows, Horizontal Louver	MJ (Madinat Jumerah Living)	Next Engineering Consultants	Al Sahel Contracting Company LLC	Ongoing
G+1 Townhouses @ Mag City Phase 1 A	Supply and Installation of Aluminum and Glass Works	Mag Group F.Z.E	VX Studio Consultancy	Intermass Engineering & Contracting	Ongoing
G42 Pharmaceutical Manufacturing	Stick Curtain Wall, Doors, Windows and Louvers	Kizad Life Science Park	ECG Engineering Consultant Group	China State Construction Engineering	Initial Stage-Contract Review

## COMPLETED PROJECTS – SUPPLY AND INSTALLATION – 2020-2021

Project Name	Scope of Work	Client	Consultant	Main Contractor	Status
Deira Waterfront Phase 1, Plot 09	Supply & Installation of Stick Curtain Walls, Doors, Windows, Cladding, Aluminum Trellis, Louver & Aluminum Balustrades	Ithra Dubai - Deira Waterfront Development LLC	DAR	CSCEC	Completed (Awaiting ToC)
Burj Royale on Plot 97	Supply & Installation of Glass Balustrade	EMAAR	U+A	AFC	Completed (Awaiting ToC)





## **Gridwalls UK**

Unit A1b- Fairacres Industrial Estate, Dedworth Road,  
Windsor, Berkshire Post code SL4 4LE, United Kingdom

Mail: [info@gridwalls.co.uk](mailto:info@gridwalls.co.uk)

[www.gridwalls.co.uk](http://www.gridwalls.co.uk)